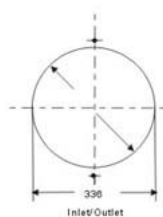


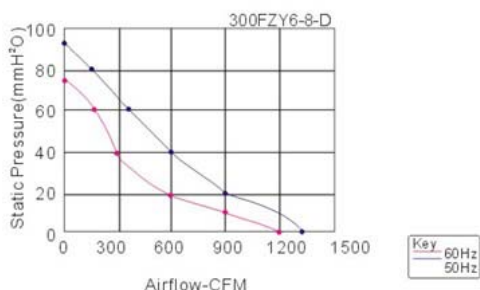
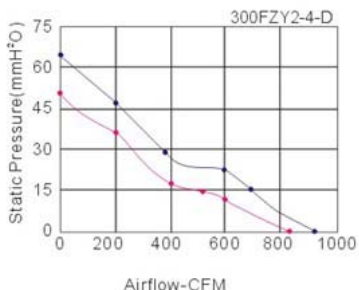
尺寸 Size: 340mmx100mm  
 风量 Airflow: 1440~2242m<sup>3</sup>/hr  
 847~1320CFM

重量 Weight: 3400g  
 噪音 Noise: 65~73dBA  
 风叶 Impeller: Iron Leaf  
 外框 Frame: All Metal  
 引线 Lead Wire: The Mostable Wire  
 马达 Motor: Capacitor-Run External Rotor  
 Induction Motor

安规认证 Safety: TUV>CE>CCC  
 温度范围 Operation Temperature: -10°C ~ +105°C



Model (型号)	Bearing System (轴承型式)	voltage VAC (电压)	Freq. Hz (频率)	Current A (电流)	Power W (功率)	Speed RPM (转速)	Noise dBA (噪音)	Air Flow (风量)		Phase (相数)	Capacitor (电容)
								M3/hr	CFM		
300FZY2-D	Ball	200~240	50/60	0.4	80	1300/1500	65/68	1440/1580	847/931	1	4.0uf/450v
300FZY3-D	Ball	380~420	50/60	0.22	80	1300/1500	65/68	1440/1580	847/931	3	—
300FZY4-D	Ball	380~420	50/60	0.25	80	1300/1500	65/68	1440/1580	847/931	1	2.2uf/630v
300FZY6-D	Ball	200~240	50/60	0.8	160	2300/2700	70/73	2040/2242	1200/1320	1	4.0uf/450v
300FZY7-D	Ball	380~420	50/60	0.45	160	2300/2700	70/73	2040/2242	1200/1320	3	—
300FZY8-D	Ball	380~420	50/60	0.5	160	2300/2700	70/73	2040/2242	1200/1320	1	2.2uf/630v



Key 60Hz  
50Hz