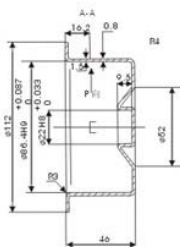
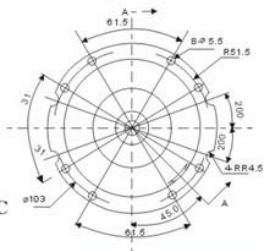
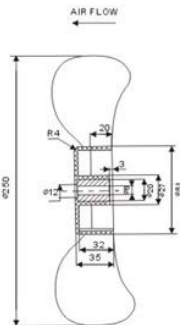
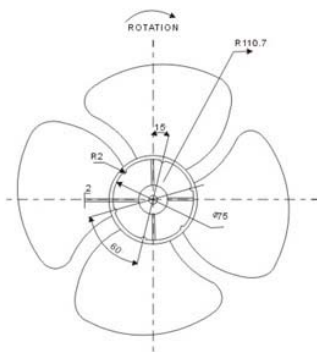


详细介绍:



风量 Airflow:1080~1250m³/hr
635~735CFM

重量 Weight:2200g

噪音 Noise:60~65dBA

风叶 Impeller:Reinforced Nylon

外框 Frame:All Mater

引线 Lead Wire:The Mostable Wire

马达 Motor:Capacitor-Run Induction Motor

安规认证 Safety: Ⓢ

温度范围 Operation Temperature:-10°C ~ +65°C

Model (型号)	Bearing System (轴承型式)	voltage VAC (电压)	Freq. Hz (频率)	Current A (电流)	Power W (功率)	Speed RPM (转速)	Noise dBA (噪音)	Air Flow (风量)		Phase (相数)	Capacitor (电容)
								M3/hr	CFM		
FNZ-24-250(D ₂)	Ball	200~240	50/60	0.35	70	1400/1650	60/65	1080/1250	635/735	1	1.2uf/630v
FNZ-24-250(D ₃)	Ball	380~420	50/60	0.22	70	1400/1650	60/65	1080/1250	635/735	1	0.47uf/630v

